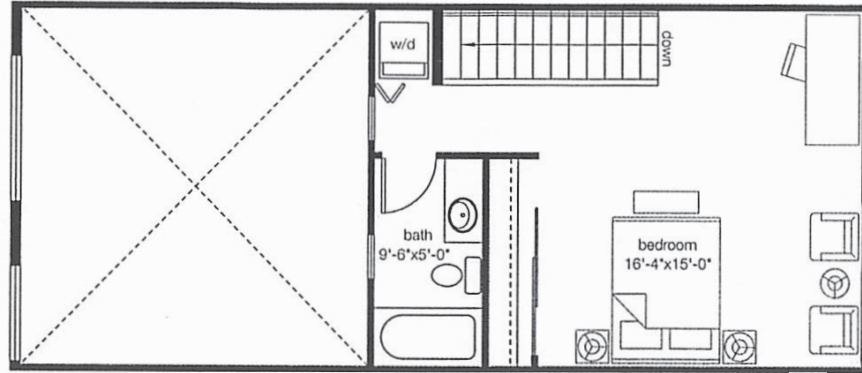


olive 2c

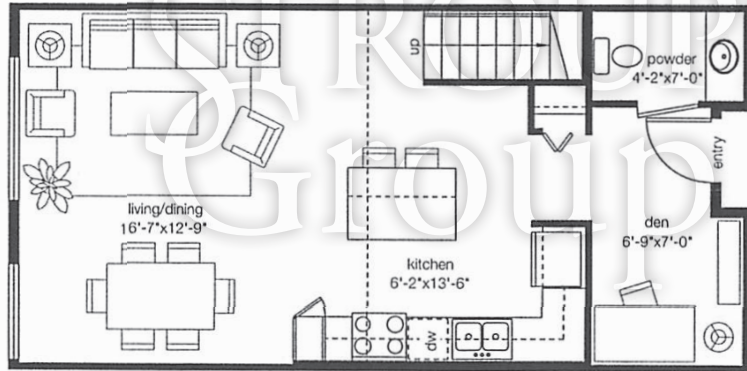


olive series

1 bedroom / 1.5 bath + den, 2 story loft, approx. 913 sf



upper level



lower level



tenth avenue e
floor 2: 239

700 broadway avenue east, seattle, wa 98102
p (206) 262-9416 w brixcondos.com

W williamsmarketing, inc.

In an effort to improve its product, the proposed development continues to evolve and the developer reserves the right in its sole discretion to make changes or modification including but not limited to the floorplans, elevations, plans, maps, specifications, materials, features, colors and prices without notice. All floorplans, maps, plans, landscaping and elevation renderings are artist's conceptions and are not necessarily to scale. Square footage and dimensions are architectural approximations and subject to change without notice. LIC-8